

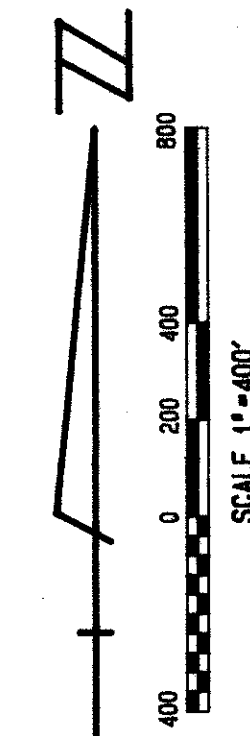
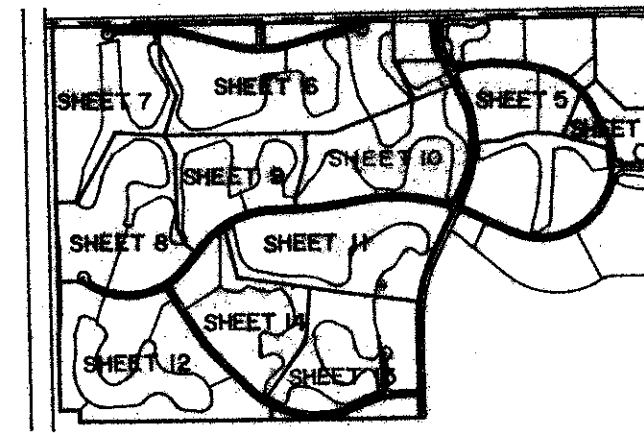
# A PART OF LAKE CHARLESTON PLANNED UNIT DEVELOPMENT LAKE CHARLESTON PLAT NO. 3

IN 14 SHEETS SHEET 3  
JUNE 1988

57

## AREA TABULATION

TRACT AA	13.5221	TRACT T	8.3287	RECREATION CENTER	11.6223	EAST PARCEL	88.8165
TRACT A	21.4686	TRACT U	4.41064	DAY CARE TRACT	1.9285	WEST PARCEL	648.1793
TRACT B	12.9881	TRACT V	28.3567	SCHOOL TRACT	14.9999	PARCEL C-1	0.0073
TRACT C	31.2260	TRACT W	10.4901	CHURCH TRACT 1	3.5264	TOTAL	737.0031 ACRES
TRACT D	14.5900	TRACT X	22.8606	CHURCH TRACT 2	4.9082		
TRACT E	32.9510	TRACT Y	5.0874	BUFFER TRACT 1	0.38894		
TRACT F	11.7028	TRACT Z	18.1938	BUFFER TRACT 2	2.0415		
TRACT G	19.2781	LAKE TRACT 1	111.9143	BUFFER TRACT 3	0.4037		
TRACT H	33.7089	LAKE TRACT 2	3.6000	BUFFER TRACT 4	0.9890		
TRACT I	20.6888	LAKE TRACT 3	3.0001	CHARLESTON SHORES BLVD (N)	5.2828		
TRACT J	19.6722	LAKE TRACT 4	59.9509	CHARLESTON SHORES BLVD (S)	10.5640		
TRACT K	10.4197	LAKE TRACT 5	24.7694	MULTRIE DRIVE	7.8779		
TRACT L	10.9029	PARK TRACT 1	9.0000	SANTEE TERRACE	1.2642		
TRACT M	12.9646	PARK TRACT 2	4.9872	SUMMerville TERRACE	0.6519		
TRACT N	16.0916	PARK TRACT 3	4.8639	EDISTO DRIVE	7.2289		
TRACT O	14.1179	PARK TRACT 4	5.5194	PARCEL C-1	0.0073		

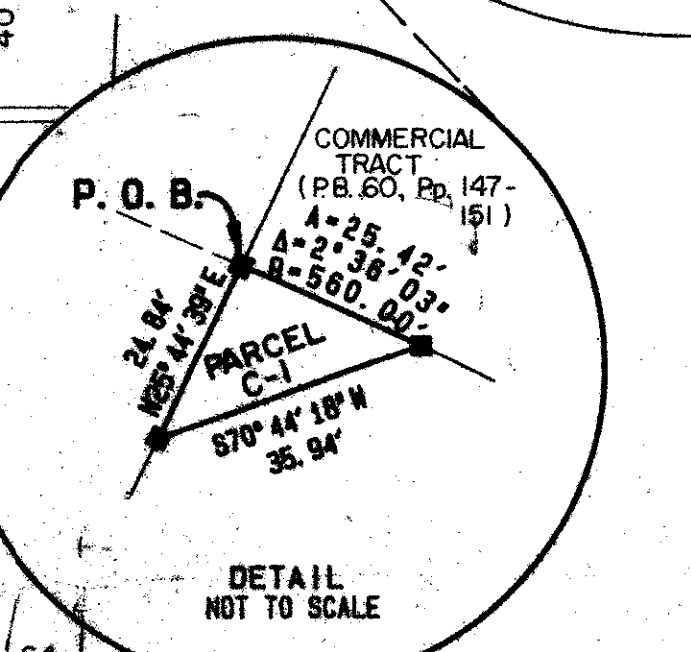
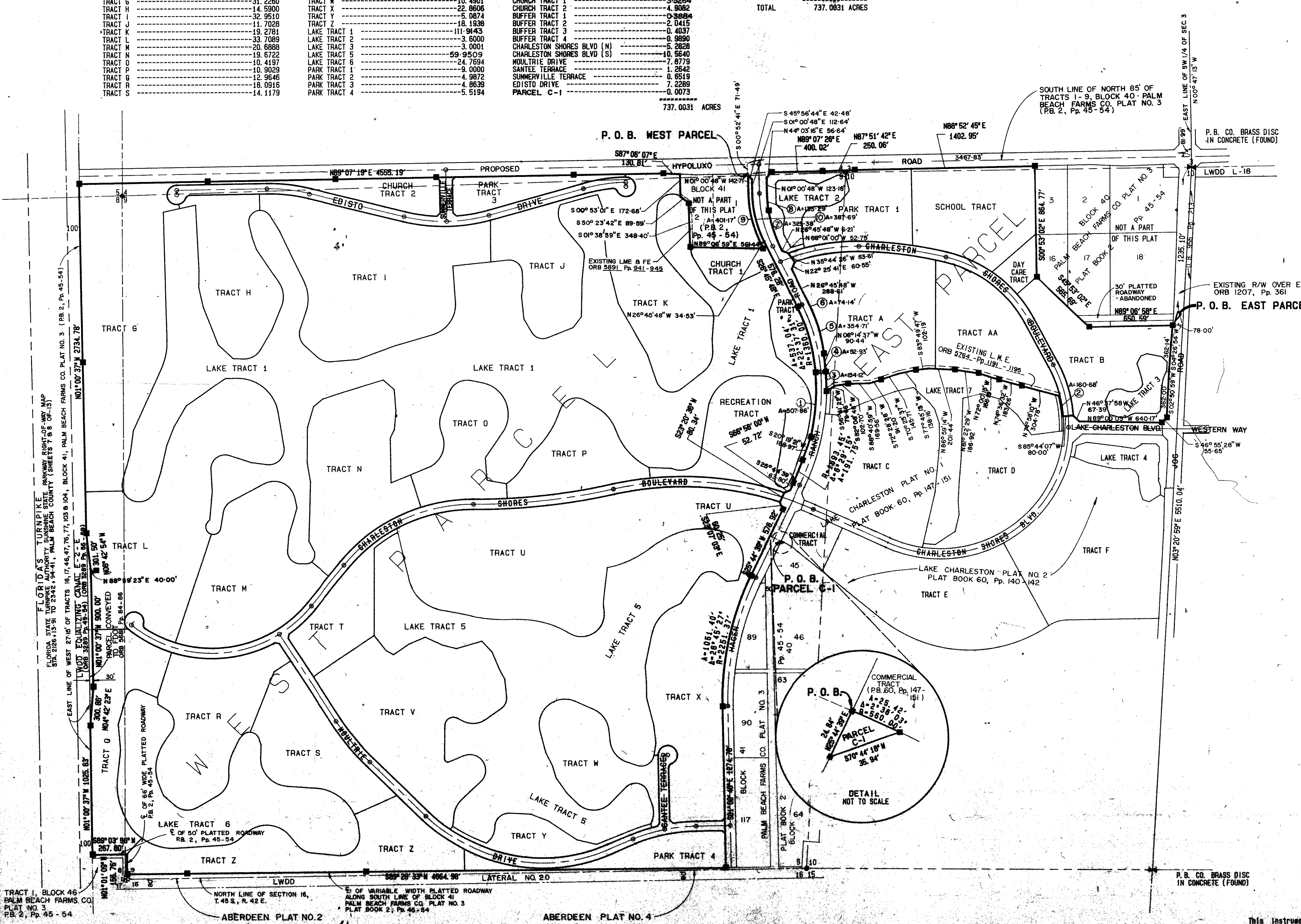


TOTAL ACREAGE	P. U. D. TABLE	737.0031
DENSITY	(TO BE DETERMINED BY PLATTING OF TRACTS)	
OPEN SPACE		260.0000 ACRES
LAKES		203.2347 ACRES
PARKS AND RECREATION		35.9928 ACRES
ROADWAYS		32.8697 ACRES
BUFFER TRACTS		3.8226 ACRES

BEARING	DISTANCE	RADIUS	DELTA	LENGTH
①		R=1707.46'	Δ=17°02'30"	A=507.86'
②		R=960.00'	Δ=9°35'24"	A=160.68'
③		R=1787.46'	Δ=4°56'25"	A=154.12'
④		R=1440.00'	Δ=2°06'21"	A=52.93'
⑤		R=154.85'	Δ=17°35'53"	A=354.71'
⑥		R=1454.00'	Δ=2°55'18"	A=74.14'
⑦		R=1083.63'	Δ=17°12'15"	A=325.38'
⑧		R=893.66'	Δ=8°32'45"	A=133.29'
⑨		R=892.64'	Δ=25°45'00"	A=401.17'
⑩		R=862.64'	Δ=25°45'00"	A=387.69'

NOTE: THESE NUMBERS ARE NOT COURSE NUMBERS CITED IN DESCRIPTION.

NOTE: ALL PLATTED ROADWAYS CONTAINED IN BLOCKS 40 AND 41 (PALM BEACH FARMS CO. PLAT NO. 3, P.B. 2, Pp. 45-54) WERE ABANDONED BY RESOLUTION NO. R-78-771 (ORB 2891 p. 323)



REVISION: LAKE CHARLESTON  
 BOOK 62 57  
 PLAT NO. 3  
 QUAD 49  
 33467  
 86-94  
 PUD W/NO. 3  
 TAZ 429

Pet. 86-96

0533-004

62/57

TRACT I, BLOCK 46 PALM BEACH FARMS CO. PLAT NO. 3, P.B. 2, Pp. 45-54  
 ABERDEEN PLAT NO. 2 P.B. 55 PGS 11-22  
 ABERDEEN PLAT NO. 4 P.B. 55 PGS 36-39

This instrument was prepared by Phillip M. Faulk in the offices of Mack, Ross & Asso., Inc. 5728 Corporate Way, West Palm Beach, Florida 33407. (407 683-3113)

**LAKE CHARLESTON PLAT NO. 3**